

REYKJAVIK to TROMSØ

Welcome to the Realm of the Polar Bear! With over 60% of the Svalbard region covered in ice, the breathtakingly beautiful icebergs and glaciers of the Svalbard Archipelago will not fail to disappoint. Elusive and serene, the King of the Arctic makes his happy home here; Zodiac cruises provide ample opportunities to get as close to the wondrous beast as possible, meaning you can cross off this bucket list must see.

Silversea Expeditions | Silver Cloud Expedition | Voyage 1914

BOOK AND PAY IN FULL BY 31 AUGUST, 2018 AND SAVE 10%*



DURATION

14

DAYS

DEPARTURE

JUN 18

2019

FARES FROM

(PER GUEST)

US\$ 14,400

US\$ 12,960

WITH EARLYBOOKING BONUS

★ FEATURED EXCLUSIVE OFFERS / PROGRAMMES:

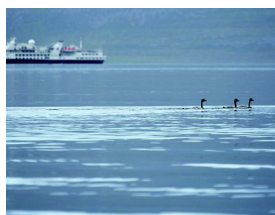
10% Early Booking Bonus: Book and pay in full by 31 August, 2018 and save 10%*

Arctic - Special Savings: Book by 31 July, 2018 and enjoy \$2,000 savings per suite*

Fares shown are per guest

EXPEDITION CRUISE ITINERARY

Our itineraries are second-to-none – below please find detailed information regarding ports of call, arrival and departure times, as well as supplemental information about the destinations you'll visit



| DATE | DAY-BY-DAY | ARRIVE / DEPART |
|------------------|------------------------------------|------------------------------|
| Tuesday 18 Jun | REYKJAVIK , Iceland | Depart 16:00 |
| Wednesday 19 Jun | LATRABJARG CLIFFS , Iceland | Arrive: 05:30 , Depart 10:30 |

See following page for the rest of the itineraries ➤

VIEW MORE ABOUT THIS EXPEDITION CRUISE: <https://www.silversea.com/destinations/cruises-arctic-greenland/reykjavik-to-tromso-1914.html>

To view all terms and conditions please visit: <https://www.silversea.com/terms-and-conditions.html>

◀ *Itineraries continued from previous page*

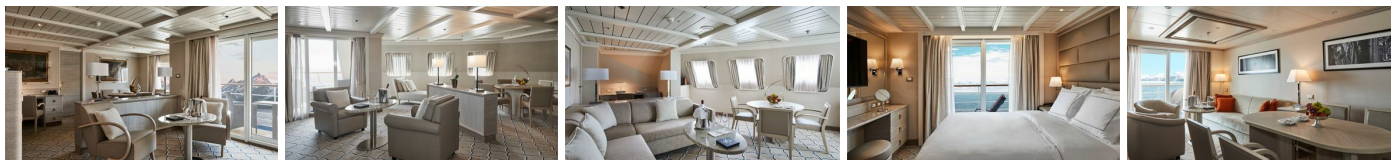
| DATE | DAY-BY-DAY | ARRIVE / DEPART |
|--|---|------------------------------|
| Wednesday 19 Jun | DYNJANDI , Iceland | Arrive: 15:30 , Depart 20:30 |
| Thursday 20 Jun | VIGUR ISLAND , Iceland | Arrive: 06:30 , Depart 11:00 |
| Thursday 20 Jun | CRUISE ALONG HORNBJARD CLIFFS, ICELAND , Iceland | Arrive: 15:30 , Depart 20:00 |
| Friday 21 Jun | AKUREYRI , Iceland | Arrive: 07:00 , Depart 23:00 |
| Saturday 22 Jun | DAY AT SEA , At sea | |
| Sunday 23 Jun | JAN MAYEN , Norway | Arrive: 06:00 , Depart 12:00 |
| Monday 24 Jun | DAY AT SEA , At sea | |
| From Tuesday 25 Jun To Thursday 27 Jun | SVALBARD NORTHERN REGION , Norway | |
| From Friday 28 Jun To Sunday 30 Jun | SVALBARD SOUTHERN REGION , Norway | |
| Monday 01 Jul | CRUISE & EXPLORE BEAR ISLAND , Norway | Arrive: 06:00 , Depart 11:00 |
| Tuesday 02 Jul | TROMSØ , Norway | Arrive: 09:00 |

VIEW MORE ABOUT THIS EXPEDITION CRUISE: <https://www.silversea.com/destinations/cruises-arctic-greenland/reykjavik-to-tromso-1914.html>

To view all terms and conditions please visit: <https://www.silversea.com/terms-and-conditions.html>

SELECT YOUR SUITE AND REQUEST A QUOTE

Silversea's oceanview suites are some of the most spacious in luxury cruising. All include the services of a butler thanks to the highest service ratio at sea and almost all have a private teak veranda so that you can breathe in the fresh sea air by merely stepping outside your door. Select your suite and Request a Quote - guests who book early are rewarded with the best fares and ability to select their desired suite



| CATEGORY | DIMENSIONS | FARES FROM (PER GUEST) |
|-----------------------------|---|---|
| OWNER'S SUITE | 587 ft ² / 55 m ² incl. veranda (89 ft ² / 8 m ²) Deck 7 | US\$ 55,700 US\$ 50,130 WITH EARLY BOOKING BONUS |
| GRAND SUITE | 1,019 ft ² / 95 m ² including veranda (145 ft ² / 14 m ²) Deck 7 | US\$ 52,700 US\$ 47,430 WITH EARLY BOOKING BONUS |
| ROYAL SUITE | 736 ft ² / 69m ² including veranda (126 ft ² / 12 m ²) Deck 6 | US\$ 50,800 US\$ 45,720 WITH EARLY BOOKING BONUS |
| SILVER SUITE | 541 ft ² / 52 m ² Including veranda (92 ft ² / 8 m ²) Deck 6/7 | US\$ 35,500 US\$ 31,950 WITH EARLY BOOKING BONUS |
| MEDALLION SUITE | 437 ft ² / 40.6 m ² Including veranda (81 ft ² / 7.6 m ²) Deck 5/6/7 | US\$ 31,800 US\$ 28,620 WITH EARLY BOOKING BONUS |
| DELUXE VERANDA SUITE | 295 ft ² / 27 m ² including veranda (49 ft ² / 4,5 m ²) Deck 5/6 | US\$ 19,100 US\$ 17,190 WITH EARLY BOOKING BONUS |
| VERANDA SUITE | 295 ft ² / 27 m ² including veranda (49 ft ² / 4,5 m ²) Deck 5/6/7 | US\$ 18,200 US\$ 16,380 WITH EARLY BOOKING BONUS |
| VISTA SUITE | 240 ft ² / 22m ² Deck 4 | US\$ 14,400 US\$ 12,960 WITH EARLY BOOKING BONUS |

VIEW MORE ABOUT THIS EXPEDITION CRUISE: <https://www.silversea.com/destinations/cruises-arctic-greenland/reykjavik-to-tromso-1914.html>

To view all terms and conditions please visit: <https://www.silversea.com/terms-and-conditions.html>

INCLUDED IN THE CRUISE FARE

- Personalised service – the best crew-to-guest ratio in expedition cruising
- Butler service in every suite and stateroom – all guests are pampered equally
- Open-seating dining options – dine when and with whomever you please
- Beverages in-suite and throughout the ship – select wines, premium spirits, specialty coffees and soft drinks, plus your own tailored mini-bar
- In-suite dining and room service – available 24 hours aboard Silver Explorer, and from 06:00 to 23:00 aboard Silver Galapagos and Silver Discoverer
- Enrichment lectures by a highly qualified Expeditions Team
- Guided Zodiac, land and sea tours, and shoreside activities led by the Expeditions Team
- Gratuities always included in your fare
- Unlimited Free Wifi
- Complimentary Parka

SILVER CLOUD EXPEDITION



After extensive refurbishment, Silver Cloud is the most spacious and comfortable ice class vessel in expedition cruising. Her large suites, her destination itineraries and her unparalleled service make her truly special. Her four dining options will tantalise your taste buds and as 80% of her suites include a veranda, watching a breaching whale or a few cavorting penguins has never been so personal. Broad sweeping decks with multiple open spaces and a swimming pool complete what is surely the most distinctive expedition ship sailing today. A limited number of guests in polar waters, mean that Silver Cloud has the highest space to guest and crew to guest ratios in expedition cruising. With her 16 zodiacs, 10 kayaks, possibilities are almost limitless with ship-wide simultaneous explorations. Finally, a team of up to 22 passionate and dedicated expedition experts are always at hand to ensure your voyage is enhanced every step of the way.

Guests: 254**Crew:** 223**Length:** 514.14 Feet / 156.7 Meters

VOYAGE HIGHLIGHTS

Your expedition will lead to one discovery after another. A complimentary programme of unique, small-group shore experiences, led by team of expert guides and lectures, allows you to fully experience the lands you'll visit.

Reykjavik To Tromsø

Jun0 18, 2019 | 14 Days | Voyage 1914

Join us for a journey from Iceland to Norway, visiting isolated islands and remote regions. Aboard the Silver Cloud, and as weather permits on her Zodiacs, go past spectacular bird cliffs in Iceland and the Norwegian Archipelago of Svalbard, marvelling at the multitude of puffins, guillemots and gulls that congregate to nest. While in Iceland, explore the area around Lake Myvatn to see how geology plays an important factor in Iceland's daily life, or go whale-watching along Iceland's northern coast. In Svalbard, encounter fascinating landscapes, mountains, fjords and glaciers while looking for walrus and polar bears. Throughout the voyage, learn about the history, geology, wildlife, botany and history of this spectacular area from lecture presentations offered by your knowledgeable on board Expedition Team.

Voyage Highlights:

Latrabjarg Cliffs, Iceland –Silver Cloud will sail next to one of Europe's largest bird cliffs and a truly stunning sight to experience. The 14-kilometer cliff is covered with tens of thousands of Atlantic Puffins, Northern Gannets, Razorbills and guillemots that perch there safely from predators.

Dynjandi, Iceland –Iceland is well-known for its dazzling waterfalls, and the Dynjandi is recognized as one of the country's most impressive and majestic. Hike past 6 other spectacular waterfalls to reach Dynjandi, the Westfjords' biggest at 100 feet wide, with a 330-foot tumble into the fjord below. Dynjandi means the thundering one, named for its enormous sound.

Vigur Island, Iceland –Visit the tiny and private island to see how Icelanders collect eider down. The island is also home to Atlantic Puffins and Arctic Terns, which can be seen while walking across the island. After the walk enjoy home-baked cakes and cookies made by the Vigur Island owners.

Akureyri, Iceland –Akureyri is the gateway to Lake Myvatn (Midges Lake). The lake is part of a protected nature reserve and many birds (including thirteen species of ducks) frequent the surrounding wetlands. Nature's power is plainly displayed in Namafjall's geothermal springs, as well as on a walk along the lake's shore onto some pseudo-craters, and through the massive, often unusual lava formations of Dimmuborgir.

Jan Mayen, Norway –With permission from the Norwegian authorities and the right weather conditions, we will make a landing at this rarely visited outpost to visit the research and weather station. Walks to the station and beyond will give us a bird's-eye view of the meteorological station and of the long black sandy eastern shore of the island. From the water the sheer mass of Jan Mayen is impressive and is a known feeding ground for whales of several species.

Svalbard Northern Region, Norway –Silver Cloud will be cruising past majestic red Devonian sandstone mountains to reach the end of Liefdefjorden, for a Zodiac cruise along the 5-kilometer-long front of Monacobreen and the neighbouring Seligerbreen. This is a great place to look for seals, Black-legged Kittiwakes and Ivory Gulls. With the reinforced hull of Silver Cloud, we have the perfect platform to search for walrus and polar bears as we devote time to explore the pack ice north of Spitsbergen. Conditions permitting, we might head out in the Zodiacs for an even closer look.

Svalbard Southern Region, Norway –In Svalbard we will enter fjords, searching the ice and the shores for seabirds, walrus, seals, and polar bears. Shore walks and Zodiac landings will bring us up close to these mystical wintry settings. The Expedition Leader and Captain will determine Silver Cloud's best course, depending on changing weather, ice conditions

VIEW MORE ABOUT THIS EXPEDITION CRUISE: <https://www.silversea.com/destinations/cruises-arctic-greenland/reykjavik-to-tromso-1914.html>

To view all terms and conditions please visit: <https://www.silversea.com/terms-and-conditions.html>

and the wildlife we encounter.

Bear Island, Norway –Close to 9 kilometers of cliffs are home to some of the largest bird colonies of the Northern Hemisphere. Common Guillemots, Brünnich's Guillemots, Little Auks, Black-legged Kittiwakes, Northern Fulmars, and Glaucous Gulls are all found along the cliff. Other species have been observed, including Atlantic Puffins and even Northern Gannets. Weather depending, we will take the Zodiacs to explore the rugged coastline. Kayaking –Weather permitting, the Silver Cloud offers the opportunity to kayak in a small group under the guidance of certified kayak instructors. These special excursions are a chance to appreciate the wilds of the Arctic in silence.

Cultural Highlights:

Meet the owners of Vigur Island to learn about Eider Duck farming. Enjoy their company over a cup of tea or coffee and home-baked cookies and cakes.

Wildlife Watch List:

Polar bear, Svalbard reindeer and Arctic fox

Bearded seals, grey seals, harbour seal, ringed seal, and walrus

Humpback whales, Minke whales, beluga whales, and harbour porpoises

Birds of note: Red-breasted Merganser, Barnacle Goose, Common Eider, Common Raven, Black-legged Kittiwake, Herring Gull, Lesser Black-backed Gull, Common Gull, Ivory Gull, Great Skua, Arctic Skua, Redwing, Razorbill, Common Guillemot, Black Guillemot, Brünnich's Guillemot, Atlantic Puffin, Eurasian Oystercatcher, Redshank, Meadow Pipit, Arctic Tern, Northern Gannet, Northern Fulmar. Expedition highlights and wildlife listed here are possible experiences only and cannot be guaranteed.

Expedition highlights and wildlife listed here are possible experiences only and cannot be guaranteed. Your Expedition Leader and Captain will work together to ensure opportunities for adventure and exploration are the best possible, taking into account the prevailing weather, wildlife activity and ice conditions. Expedition Team members scheduled for this voyage are subject to change or cancellation.

GEAR UP

Not sure what to wear while onboard? **Visit our shop and gear up.** We've got layers to keep you dry and warm, breezy wear to keep you covered and cool, and accessories to keep everything packed up and ready to go. So, no matter the weather, you'll be better prepared for your expedition.

Our Gear Shop has an expert outfitting staff and features all the essentials:

Clothes for all types of weather, boot rentals, accessories and more »

Packing List »

Make sure you get all your essentials today. We offer packages or individual items, for your convenience, and recommend you place orders at least 30 days before your embarkation date.